

Venus® AND FRIENDS

Giving a hand to oral health.



KULZER
MITSUI CHEMICALS GROUP

Venus and Friends

Let's create smiles that go beyond aesthetics.

A smile makes life more beautiful, conveying warmth and happiness. Together, let's create smiles that go beyond aesthetics, capturing true joy.

Creating beautiful smiles is both a science and an art. We support your vision with two exceptional solutions:

- **Venus Pure** for reliable everyday restorations and
- **Venus Art** for cases demanding premium aesthetics.

You choose the approach that works best for you – because great results start with having the right options. Together, we deliver smiles that make a difference.

Your choice, their smile

Discover our comprehensive range of restorative solutions designed to enhance your workflow at every stage. Whether you prioritise efficiency or exceptional aesthetics, we offer the perfect match for your needs.

Your success in creating confident smiles is our shared mission.

CHOOSE IT.
USE IT.
LOVE IT.



CHOOSE IT.
USE IT.
LOVE IT.



kulzer.com/venus

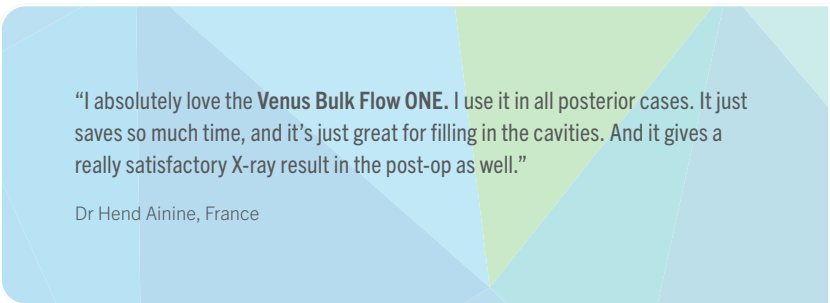
The power of voices

From practice to practice.



"Using **Venus** is always giving me the confidence to look patients in the eye when they've got a problem and know, hey, look, I can help you, and I can make it last and it will look good as well. And you know, you won't have to go through multiple visits, or particularly unnecessary, uncomfortable procedures."

Dr Mahmoud Ibrahim, UK



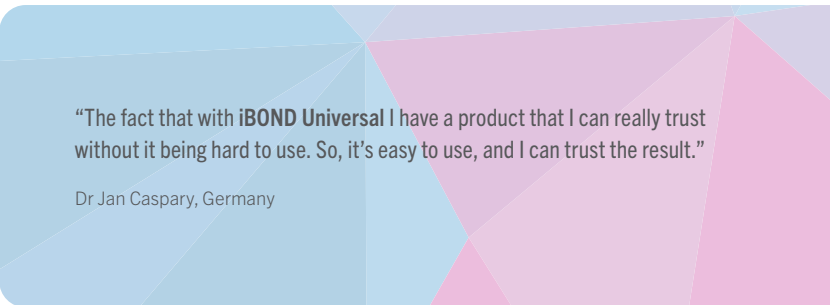
"I absolutely love the **Venus Bulk Flow ONE**. I use it in all posterior cases. It just saves so much time, and it's just great for filling in the cavities. And it gives a really satisfactory X-ray result in the post-op as well."

Dr Hend Ainine, France



"The **Venus Pure Shades** are a new addition to the range, and I think that they've got really good practical versatility, too. I feel that the fact that there are only four shades that you need to consider, make it applicable to most dentists out there to get great results consistently. I think where layering can be tricky at the best of times, in certain clinical cases, I think this gives a greater reach to a greater number of clinicians, which can only be a good thing."

Dr Andrew Chandrapal, UK



"The fact that with **iBOND Universal** I have a product that I can really trust without it being hard to use. So, it's easy to use, and I can trust the result."

Dr Jan Caspary, Germany

Every smile tells a story – and yours is part of ours. This is just a glimpse into the vibrant world of Venus and Friends, where passion meets practice and real people share real experiences. Hop over, discover more stories and inspiring tips and tricks or share your own smiles, stories and a dental spark.

www.kulzer.com/venus-stories



Ivory® Rubber Dams & Clamps

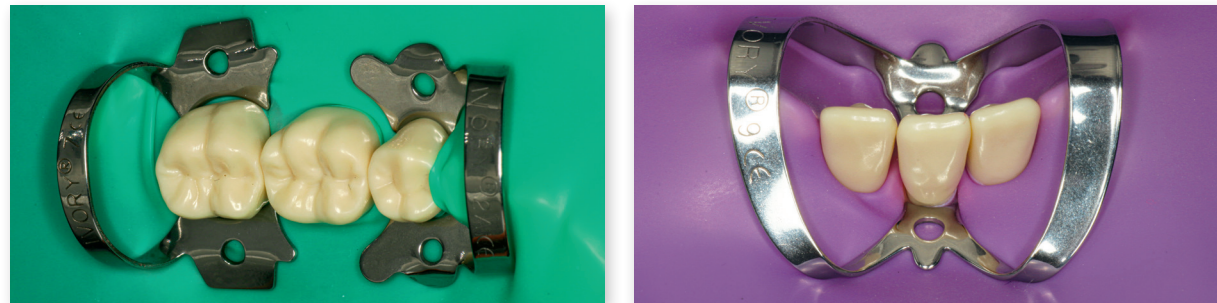
Complete isolation for optimal results.

The Ivory Rubber Dam system is designed to provide complete isolation of the treatment area, enhancing both your efficiency and your patient's safety. This system is essential for endodontic, restorative, and cosmetic procedures, ensuring a clean and dry working field for adhesive restorations.

Benefits

- ▶ **Superior Moisture Control**
Ensures a clean, dry working area, crucial for successful adhesive restorations by preventing exposure to saliva.
- ▶ **Increased Precision**
High-contrast material enhances visibility, allowing you to work with more accuracy and efficiency.
- ▶ **Safety & Comfort**
Prevents accidental instrument loss and protects gingiva and the oral mucosa from irritation caused by solvents.

Ivory in practice



Exemplary usage of Ivory products by Dr Janine Schweppe (Germany).



iBOND® Universal

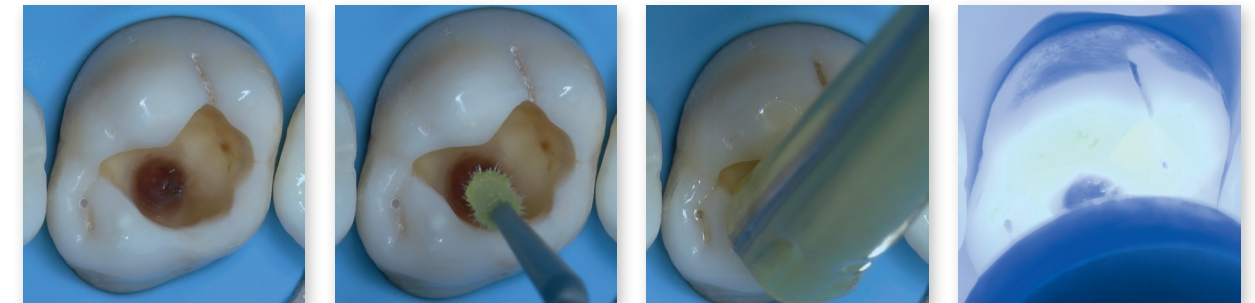
All-purpose bonding convenience.

iBOND Universal is a versatile, light-curing dental adhesive designed for all bonding techniques and various indications. It is compatible with different dental materials, including composites, silicate-ceramics, zirconia, and metals, ensuring reliable bond strength across different restorative procedures.

Benefits

- ▶ **Reliable Bond Strength**
Whether you do direct resin restorations or work with resin-based core-build-up materials or light-, self- or dual-curing adhesive resin cements for luting indirect restorations.
- ▶ **Easy Handling & Drop Control**
The bottle design prevents unwanted waste and mess, allowing for an efficient and controlled application.
- ▶ **Versatile Workflow**
Supports self-etch, total etch, and selective etch techniques, allowing you to choose your preferred method.

iBOND Universal in practice



Direct restoration using the self-etch technique by Prof. Nicola Scotti (Italy).



Venus® Bulk Flow ONE

Filling posterior cavities quickly.

Venus Bulk Flow ONE is a flowable, bulk-filling composite designed for efficient and durable posterior restorations. Its unique formulation allows for cavity fillings in increments of up to 4 mm without the need for an additional capping layer.

Experience the simplicity and efficiency of **Venus Pure** with **Venus Bulk Flow ONE**, designed for effortless, high-quality restorations that blend seamlessly with natural dentition.

Benefits

► Faster Treatment Times

The ability to easily fill cavities in 4 mm increments reduces chair time, and provides a quicker, more comfortable experience.

► Natural-looking Smile

The composite blends seamlessly into your patient's dentition and ensures that the restorations are virtually invisible.

► Durable Restorations

The combination of low shrinkage stress and high flexural strength ensures long-lasting, wear-resistant restorations.

Venus Bulk Flow ONE in practice



Quick and easy restorations with Venus Bulk Flow ONE by Dr med. dent. Nora Joos (Germany). First publication: dzw, edition 38/2022.



Venus® Diamond Flow

Flowable for anterior and posterior restorations.

Venus Diamond Flow is a flowable nanohybrid composite designed for minimally invasive restorations. Its thixotropic consistency ensures that the material flows smoothly under pressure but remains stable once placed, amongst others particularly ideal for class V restorations.

Discover the versatility of **Venus Diamond Flow**, offering both the straightforward efficiency of **Venus Pure** and the high-end aesthetics of **Venus Art** to meet all your restorative needs.

Benefits

► Reliable results with every application

Easily adapt your approach to meet each patient's unique needs. Choose a simplified workflow with Venus Pure or a comprehensive shade range with Venus Art for ultimate aesthetics.

► Confident Smile

Restorations blend seamlessly into your patient's dentition and ensure a satisfying, natural-looking result – from everyday to high-end aesthetic demands.

► Durable Restorations

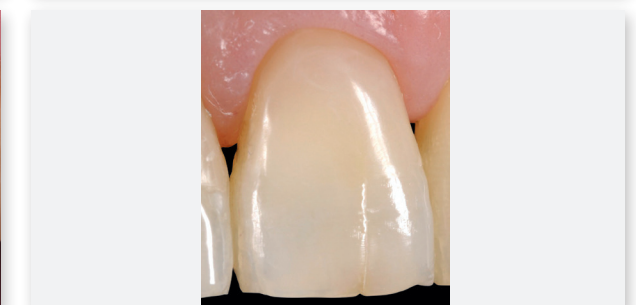
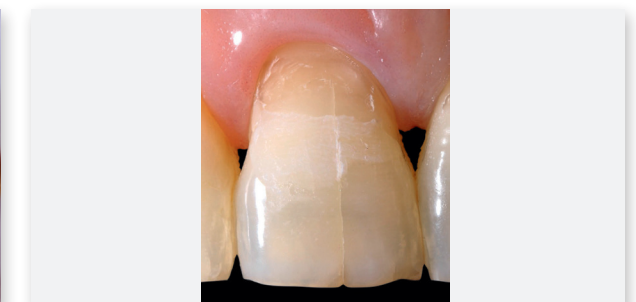
The nanohybrid formulation ensures long-lasting, wear-resistant restorations.

Venus Diamond Flow Pure Shades in practice

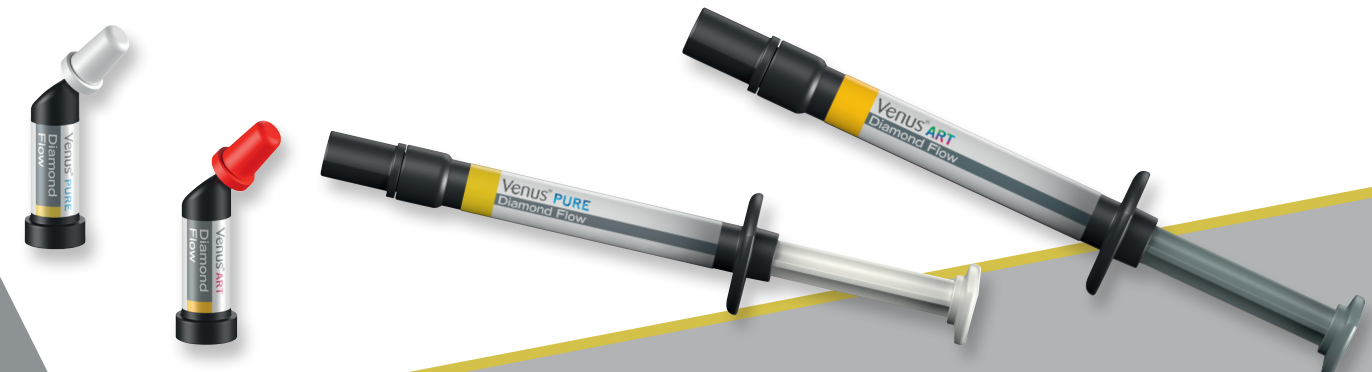


Monochromatic class V restoration at 3-month-check with Venus Diamond Flow DARK by Dr Alessandro Colella (Italy).

Venus Diamond Flow Art Shades in practice



Class V restoration with Venus Diamond Flow Art Shades by Ulf Krueger-Janson (Germany).



Venus® Pearl and Venus® Diamond

Sculpting anterior and posterior restorations.

The Venus composite family presents two exceptional nanohybrid options: Venus Diamond featuring a firm consistency and Venus Pearl providing a creamier texture, each delivering low-stick handling and high physical performance. Suitable for anterior and posterior applications, these composites ensure excellent sculptability, creating natural-looking restorations that stand the test of time.

Discover the versatility of **Venus Pearl** and **Venus Diamond**, offering both the straightforward efficiency of **Venus Pure** and the high-end aesthetics of **Venus Art** to meet all your restorative needs.

Benefits

► Reliable Outcomes Each Time

Easily adapt your approach to meet each patient's unique needs. Choose a simplified workflow with Venus Pure or a comprehensive shade range with Venus Art for ultimate aesthetics.

► Confident Smile

Restorations blend seamlessly into your patient's dentition and ensure a satisfying, natural-looking result – from everyday to high-end aesthetic demands.

► Durable Restorations

The nanohybrid formulation ensures long-lasting, wear-resistant restorations.

Venus Pearl Pure Shades in practice



Quick monochromatic restorations at chipped upper central incisors with Venus Pearl MEDIUM by Dr Jukka Paakkanen (Finland).

Venus Art Shades in practice



Closure of multiple diastema from canine to canine after 4 years with Venus Diamond B1 and Venus Pearl OLC by Dr Mahmoud Ibrahim (UK).

BEFORE
AFTER



Unleashing strength

The unique advantages of our TCD matrix.

The TCD matrix features a unique urethane molecule that vibrates less and requires less space than conventional molecules like Bis-GMA/TEGDMA. This minimal movement results in lower shrinkage stress, reducing the risk for marginal gaps and secondary caries. The extensive cross-linking enhances strength and longevity, minimising the risk of chipping or fracture.

The matrix is entirely free of BPA structures, with external laboratory testing confirming no detectable BPA release of both unpolymerised and polymerised Venus Pearl and Venus Diamond composites.¹

Benefits at a glance

► Reduced shrinkage stress

Supports marginal integrity and reduces risk of secondary caries.

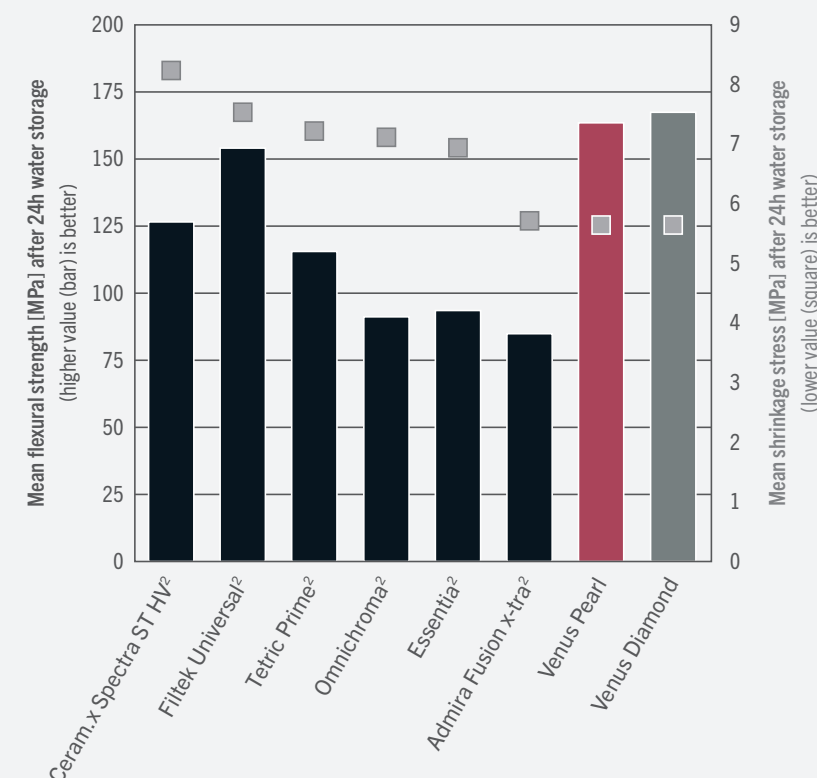
► Superior strength

Exceptional resistance to chipping, fracture and wear.

► Safe composition

Proven absence of BPA-related monomers for peace of mind.

Mean shrinkage stress (blue squares) after 24 h [MPa] and mean flexural strength (bars) after 24 h [MPa] of the tested composite materials.



Source: Flexural strength and polymerisation shrinkage stress of composite materials, Leyer A, Schweppe J, Utterodt A, J Dent Res Vol 103 (Spec Iss B): 0026, 2024.

CLINICAL CONFIDENCE

"The TCD matrix is like the secret sauce. It gives me confidence when treating cases with higher chipping risks. Venus is my go-to because it's a material I can rely on."

Dr Mahmoud Ibrahim, UK

"The composite is really easy to use. It packs perfectly into the cavity and achieves the desired shape. Thanks to the matrix, the handling is excellent compared to other products."

Dr Hend Ainine, France

"Most cases referred to me are wear patients. When increasing vertical dimension, we can apply conservative treatments for worn dentition, both posteriorly and anteriorly. The TCD matrix's wear resistance makes it unique - that's why I constantly use it."

Dr Andrew Chandrapal, UK

"It has no Bis-GMA in it. So, it's much lower shrinkage and there's no bisphenol-A in the end product."

Dr Henrik Hjelte, Sweden

For a more detailed explanation check out our video:

kulzer.com/tcd-matrix

¹ Source: Test report 10-2023

² Third-Party Trademarks: Ceram-x Spectra® ST HV is a trademark of Dentsply Sirona Inc. - Filtek® Universal is a trademark of 3M Company - Tetric® Prime is a trademark of Ivoclar Vivadent AG - Omnichroma® is a trademark of Tokuyama Corporation - Essentia® is a trademark of GC Corporation - Admira® Fusion is a trademark of Voco GmbH



Filling

Venus® Color

Mimicking natural tooth characteristics with stain shades.

Venus Color is a flowable composite specially designed to enhance the aesthetics of dental restorations. It offers five unique shades – White, Blue, Corn, Amber, and Choco – enabling you to achieve highly individualised and natural-looking results for your patients.

Elevate your restorations with **Venus Art** through **Venus Color**, providing a comprehensive selection for achieving precise, high-end aesthetic results tailored to each patient's unique requirements.

Benefits

► **Personalised Smile**

Restorations blend seamlessly into your patient's dentition and ensure a satisfying, natural-looking result – particularly suitable for highly-aesthetic demands.

► **Unlimited Creativity**

Many options promote creative freedom to meet the needs of each patient while being precise.

► **Versatile and Unique**

Whether cracks in the enamel, discolored fissures or white spots – you have an individual solution for everyone.

Venus Color in practice

BEFORE



AFTER

Application of Venus Color in shade White during placement of an anterior direct restoration by Dr Jürgen Garlichs (Germany).



Polishing

Venus® Supra

Two-step polishing with minimal effort.

Venus Supra is a two-step polishing system designed to achieve high-gloss finishes on composite restorations. The system includes pre-polishers and high-gloss polishers, both made of silicone highly filled with microfine diamond powder.

Benefits

► **Natural Smile**

Achieve a high-gloss finish that seamlessly blends into the natural dentition.

► **Long-lasting Aesthetics**

Smooth, polished surfaces minimise the accumulation of plaque and stains and support a long-lasting aesthetic.

► **Streamlined Polishing**

The two-step system and versatile shapes provide an efficient, effortless polishing process.

Venus Supra in practice

BEFORE

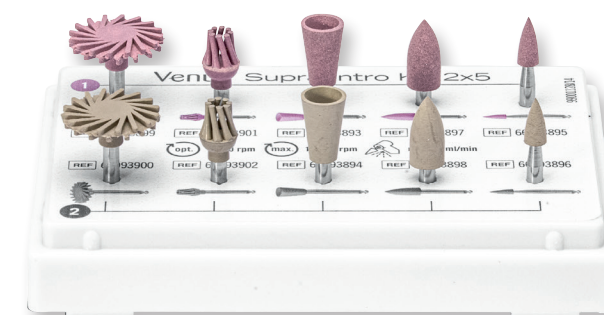


Restoration after finishing and removing any composite excess from the tooth margin.



AFTER

Right incisor so far only polished with the pink pre-polisher, and the left incisor already polished to a high gloss by Dr Gurvinder Bhirth (UK).



Article information

Product range.

Venus Bulk Flow ONE

Content	Syringe	PLT
Refills		
1x2g syringe; 5 Cannulas	6609 4723	
20x0.2g PLTs		6609 4724
Value Packs		
10x2g syringes; 50 Cannulas; Pictorial card	6609 5335	
80x0.2g PLTs; Pictorial card		6609 5388

Venus Diamond Pure Shades

Shades	Syringe	PLT
	1x4g	20x0.25g
LIGHT	6609 6872	6609 6868
MEDIUM	6609 6873	6609 6869
DARK	6609 6874	6609 6870
BLEACH	6609 6875	6609 6871
ONE	6608 1838	6608 1839

Venus Diamond Art Shades

Shades	Syringe	PLT	PLT
	1x4g	20x0.25g	10x0.25g
Universal shades			
A1	6603 5471	6603 9008	
A2	6603 5472	6603 9009	
A3	6603 5474	6603 9011	
A3.5	6603 5475	6603 9012	
A4	6603 5476		6603 9013
B1	6603 5478	6603 9015	
B2	6603 5479	6603 9016	
B3	6603 5480		6603 9017
C2	6603 5481	6603 9018	
C3	6603 5482		6603 9019
D3	6603 5483		6603 9020
HKA2.5	6603 5473	6603 9010	
HKA5	6603 5477		6603 9014
Opaque dentine shades			
OL	6603 5484		6603 9021
OLC	6604 6735		6604 6731
OM	6603 5485	6603 9022	
OMC	6604 6736		6604 6732
OD	6603 5486	6603 9023	
ODC	6604 6737		6604 6733
OXDC	6604 6738		6604 6734
Incisal shades			
CL	6603 5490		6603 9027
AM	6603 5491		6603 9028
CO	6603 5492		6603 9029
YO	6603 5493		6603 9030
Bleach shades			
BL	6603 5487		6603 9025
BXL	6603 5488		6603 9026
OB	6603 5489		6603 9024

Venus Pearl Pure Shades

Shades	Syringe	PLT
	1x3g	20x0.2g
LIGHT	6609 6880	6609 6876
MEDIUM	6609 6881	6609 6877
DARK	6609 6882	6609 6878
BLEACH	6609 6883	6609 6879
ONE	6608 1836	6608 1837

Venus Pearl Art Shades

Shades	Syringe	PLT	PLT
	1x3g	20x0.2g	10x0.2g
Universal shades			
A1	6604 8175	6604 8090	
A2	6604 8176	6604 8141	
A3	6604 8178	6604 8143	
A3.5	6604 8179	6604 8144	
A4	6604 8180	6604 8145	
B1	6604 8182	6604 8147	
B2	6604 8183	6604 8148	
B3	6604 8184	6604 8149	
C1	6604 8185	6604 8150	
C2	6604 8186	6604 8161	
C3	6604 8187	6604 8162	
D3	6604 8188	6604 8163	
HKA2.5	6604 8177	6604 8142	
HKA5	6604 8181	6604 8146	
Opaque dentine shades			
OLC	6604 8189		6604 8164
OMC	6604 8190		6604 8165
ODC	6604 8191		6604 8093
OXDC	6604 8192		6604 8094
Incisal shades			
CL	6604 8196		6604 8098
AM	6604 8197		6604 8099
CO	6604 8198		6604 8100
YO	6604 8199		6604 8171
Bleach and special shades			
BL	6604 8193		6604 8096
BXL	6604 8194		6604 8097
OB	6604 8195		6604 8095
CORE	6604 8200		6604 8172*
GUM	6604 8201		6604 8173

*10x0.3g

Venus Diamond Flow Pure Shades

Shades	Syringe	PLT
	1x1.8g	20x0.2g
LIGHT	6610 0268	6610 0272
MEDIUM	6610 0269	6610 0273
DARK	6610 0270	6610 0274
BLEACH	6610 0271	6610 0275

Venus Diamond Flow Art Shades

Shades	Syringe	PLT
	1x1.8g	20x0.2g
Universal shades		
A1	6604 0354	6604 0368
A2	6604 0355	6604 0369
A3	6604 0358	6604 0371
A3.5	6604 0359	6604 0372
A4	6604 0360	6604 0373
B2	6604 0362	6604 0375
HKA2.5	6604 0357	6604 0370
HKA5	6604 0361	6604 0374
Opaque dentine shades		
OM	6604 0363	6604 0376
Baseliner	6604 1052	6604 1051
Incisal shades		
CL	6604 0364	6604 0377
Bleach shades		
BXL	6604 0365	6604 0378

Venus Color Art Shades

Content	Syringe	Syringe
	1x1g	5x1g
Shades		
WHITE	6605 4206	
BLUE	6605 4207	
CORN	6605 4208	
AMBER	6605 4209	
CHOCO	6605 4210	
Assortment		
Venus Color Syringe Assortment (1 x 1 g each: white, blue, corn, amber, choco)		6605 4221

Hygienic Protective Sleeve

Content	
Hygienic protective sleeves to protect syringes from contamination by blood, saliva or other contaminants. 300 pieces	6609 7644

Shade Guides

Content	
Venus Diamond Shade Guide	6603 9004
Venus Pearl Shade Guide	6605 5463

Venus Diamond Kits

Content	PLT
Venus Diamond Pure Kit	
20x0.25g PLTs each of Venus Diamond shades LIGHT + MEDIUM; 2g syringe of Venus Bulk Flow ONE; 2ml bottle of iBOND Universal; 5 Flow Cannulas; Translation card; Pictorial card iBOND Universal	6609 8264
Venus Diamond Pure Collection Kit	PLT
20x0.25g PLTs each of Venus Diamond shades LIGHT + MEDIUM; 2g syringe of Venus Bulk Flow ONE; 1.8g syringes each of Venus Diamond Flow shades LIGHT + MEDIUM; 3x5 Flow Cannulas; Translation card	6610 0277
Venus Diamond Pure Kit	Syringe
4g syringes each of Venus Diamond shades LIGHT + MEDIUM; 2g syringe of Venus Bulk Flow ONE; 2ml bottle of iBOND Universal; 5 Flow Cannulas; Translation card; Pictorial card iBOND Universal	6609 8265
Venus Diamond Pure Collection Kit	Syringe
4g syringes each of Venus Diamond shades LIGHT + MEDIUM; 2g syringe of Venus Bulk Flow ONE; 1.8g syringes each of Venus Diamond Flow shades LIGHT + MEDIUM; 3x5 Flow Cannulas; Translation card	6610 0276

Venus Pearl Kits

Content	PLT
Venus Pearl Pure Kit	
20x0.2g PLTs each of Venus Pearl shades LIGHT + MEDIUM; 2g syringe of Venus Bulk Flow ONE; 2ml bottle of iBOND Universal; 5 Flow Cannulas; Translation card; Pictorial card iBOND Universal	6609 8266
Venus Pearl Pure Collection Kit	PLT
20x0.2g PLTs each of Venus Pearl shades LIGHT + MEDIUM; 2g syringe of Venus Bulk Flow ONE; 1.8g syringes each of Venus Diamond Flow shades LIGHT + MEDIUM; 3x5 Flow Cannulas; Translation card	6610 0279
Venus Pearl Pure Kit	Syringe
3g syringes each of Venus Pearl shades LIGHT + MEDIUM; 2g syringe of Venus Bulk Flow ONE; 2ml bottle of iBOND Universal; 5 Flow Cannulas; Translation card; Pictorial card iBOND Universal	6609 8267
Venus Pearl Pure Collection Kit	Syringe
3g syringes each of Venus Pearl shades LIGHT + MEDIUM; 2g syringe of Venus Bulk Flow ONE; 1.8g syringes each of Venus Diamond Flow shades LIGHT + MEDIUM; 3x5 Flow Cannulas; Translation card	6610 0278

Venus Pearl Assortment

Content	PLT
Venus Pearl Master Assortment	
0.2 g x 10 PLTs (Shades A1, A2, A3, A3.5, A4, HKA2.5, ONE); 0.2 g x 5 PLTs (Shades B1, B2, B3, C1, C2, C3, D3, CL, AM, CO, YO, OLC, OMC, ODC, OXDC, BL, BXL, OB, GUM, HKA5); 0.3 g x 5 PLTs (Shade CORE); Venus Pearl Layering Guide	6609 6867










Article information

Product range.

Ivory Clamps

Stainless Steel Clamps		
Premolar Winged Clamps		
No. 00		5005 7302
No. 0		5005 7304
No. 1		5005 7306
No. 2		5005 7310
No. 2A		5005 7312
No. 3		5005 7322
No. 4		5005 7324
No. 7		5005 7328
No. 8		5005 7334
No. 8A		5005 7336
No. 12A		5005 7348
No. 13A		5005 7352
No. 14		5005 7354
No. 14A		5005 7356
No. 56		5005 7374
Premolar Wingless Clamps		
No. W2		5005 7510
No. W2A		5005 7512
No. W3		5005 7522
No. W8A		5005 7536
No. W14A		5005 7556
Winged Clamps		
No. 1A		5005 7308
No. 5		5005 7326
No. 7A		5005 7330
No. 10		5005 7338
No. 11		5005 7342
No. 26		5005 7370
No. 27		5005 7372
Wingless Clamps		
No. W0		5005 7504
No. W1		5005 7506
No. W4		5005 7524
No. W5		5005 7526
No. W7		5005 7528
No. W8		5005 7534
No. W14		5005 7554
No. 26N		5005 7728
No. 27N		5005 7730
No. 28N		5005 7732
No. W56		5005 7568
Anterior Clamps		
No. 6		5005 7382
No. 9		5005 7384
Tiger Clamps		
No. 1T		5005 7841
No. 2T		5005 7843
No. 2AT		5005 7847
No. 14T		5005 7849
No. 14DT		5005 7857
No. 56T		5005 7853
No. 9T		5005 7855

Ivory Rubber Dam

Rubber Dams			
For adults (6" x 6")			
 Blue Thin	36 Sheets		6609 4052
 Blue Medium	36 Sheets		6609 4053
 Blue Heavy	36 Sheets		6609 4054
 Green Medium (Mint)	36 Sheets		6609 4055
 Black Medium (Mint)	36 Sheets		6609 4056
 Purple Medium (Non Latex, Mint)	15 Sheets		6609 4057
For children (5" x 5")			
 Blue Medium	52 Sheets		6609 4058
 Green Medium (Mint)	52 Sheets		6609 4059
 Purple Medium (Non Latex, Mint)	15 Sheets		6609 4060

Ivory Rubber Dam Kits

Content		
Clamps Starter Kit contains 8 Clamps: 0, 2, 2A, 7, 8A, 9, 14, and 14A		5005 7968

Ivory Rubber Dam Accessories

Accessories		
Rubber Dam Pliers		
Forceps		5005 7220
Punch		5005 7225
Rubber Dam Frames		
Adult Frame (6")		5005 7230
Pedo. Frame (5")		5005 7229
Rubber Dam Template		
Template 6" x 6"		6609 5030

iBOND Universal

Content		
Refill		
Bottle Refill 1x4ml		6606 1411
Value Packs		
Bottle Value Pack 3x4ml		6606 1412
Single Dose Value Pack		6606 1419

Venus Supra

Content		
Intro Kit		
Intro Kit 2x5 1 pre- and 1 high-gloss polisher of each shape (Flame, Cup, Large Flame, Twist Brush, Twist Disc)		6608 7541
Pre and Gloss Refills		
Refill Pre Cup 10 pre-polishers of shape Cup		6609 3893
Refill Gloss Cup 10 high-gloss polishers of shape Cup		6609 3894
Refill Pre Flame 10 pre-polishers of shape Flame		6609 3895
Refill Gloss Flame 10 high-gloss polishers of shape Flame		6609 3896
Refill Pre Large Flame 10 pre-polishers of shape Large Flame		6609 3897
Refill Gloss Large Flame 10 high-gloss polishers of shape Large Flame		6609 3898
Refill Pre Twist Disc 10 pre-polishers of shape Twist Disc		6609 3899
Refill Gloss Twist Disc 10 high-gloss polishers of shape Twist Disc		6609 3900
Refill Pre Twist Brush 10 pre-polishers of shape Twist Brush		6609 3901
Refill Gloss Twist Brush 10 high-gloss polishers of shape Twist Brush		6609 3902

BE PART OF IT



Behind every great restoration is a passionate professional. Dive into a world full of clinical excellence where dental practitioners share their Venus masterpieces, proven workflows and daily tips. Your expertise enriches our community.

Join & share: kulzer.com/venus-bepartofit

Contact in Germany

Kulzer GmbH
Leipziger Straße 2
63450 Hanau
Germany
info.dent@kulzer-dental.com